

DH02 - THE SECURE DATA OFFICE CONCEPT

Annemie Van Dijck, PhD

Team Manager SD Office Programmers

SGS Life Science – Secure Data Office

PhUSE 2017- 10/OCT/2017

WHEN YOU NEED TO BE SURE



- Introduction
- Secure Data Office tasks
 - Randomisation Data
 - The Pharmacokinetic (PK) Data flow
 - Other unblinding data streams
 - Cleaning of unblinding data
 - Deliver blinded result transfers
 - Deliver data to unblinded teams
- Conclusion

- Introduction
- Secure Data Office tasks
 - Randomisation Data
 - The Pharmacokinetic (PK) Data flow
 - Other unblinding data streams
 - Cleaning of unblinding data
 - Deliver blinded result transfers
 - Deliver data to unblinded teams
- Conclusion

- Double blind study:
 - Subject and investigator are unaware of treatment status
 - Parties without access to unblinding data: subjects, investigators, data management, statistics, PK analysts, sponsor
 - Parties with access to unblinding data: pharmacists, bio-analysis lab, unblinded CRA

- Unblinding data:
 - Any data that can unblind the study
 - Treatment information
 - Pharmacokinetic data
 - Immunogenicity data
 - Biomarkers
 -

- Downside:
 - Unblinding data is not cleaned
 - Delay in clinical database lock or unblinding data are not included in lock
 - Crunched timelines for some parts of the analysis

Who should handle randomisation data and other unblinding data (e.g. PK, biomarker, immunogenicity data)?

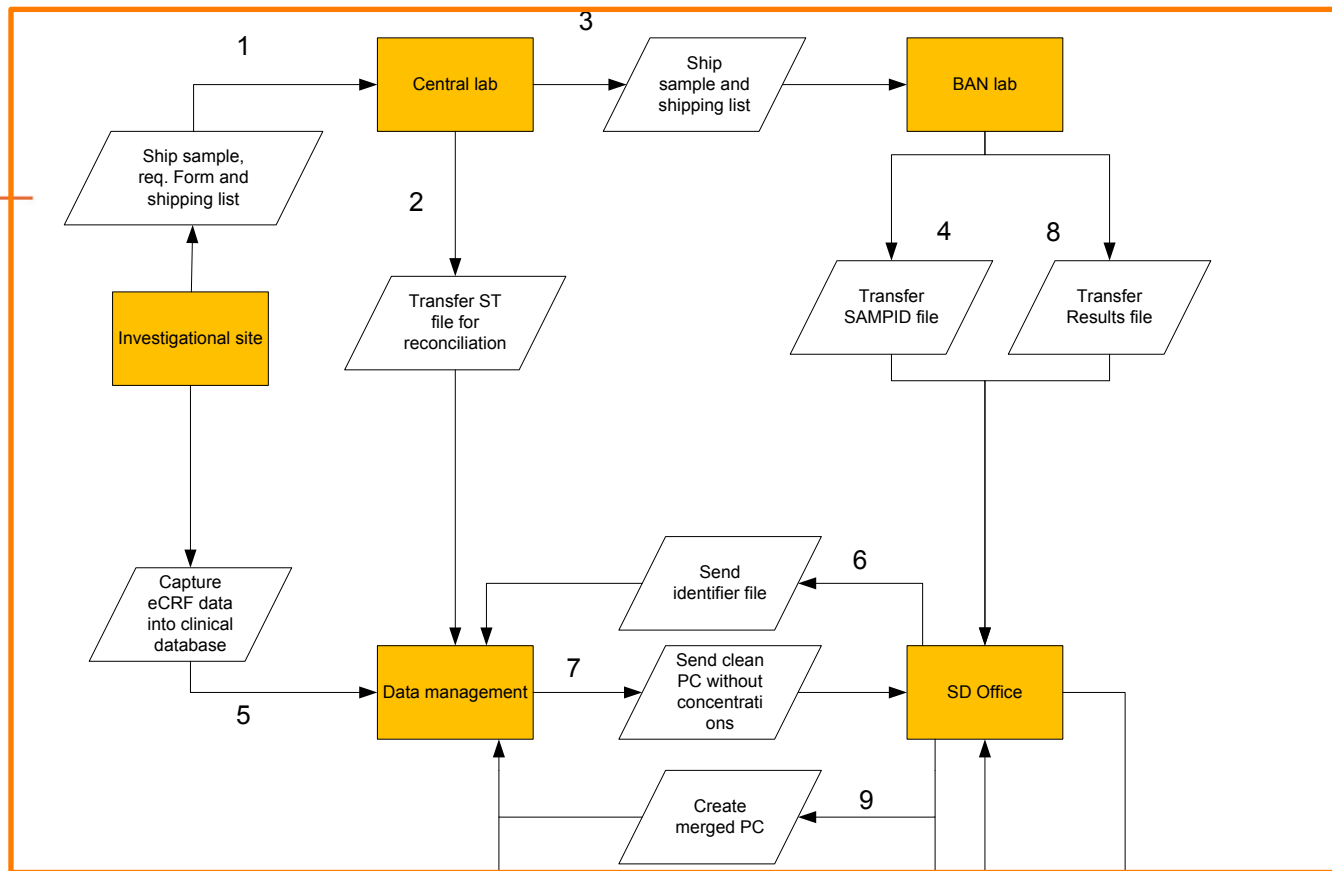
- Dedicated team, physically separated from other study team members
- Secure server locations and separate databases
- Clearly defined processes in SOPs and WIs

- Introduction
- **Secure Data Office tasks**
 - Randomisation Data
 - The Pharmacokinetic (PK) Data flow
 - Other unblinding data streams
 - Cleaning of unblinding data
 - Deliver blinded result transfers
 - Deliver data to unblinded teams
- Conclusion

- Generation of randomisation lists
 - Documented randomisation list specifications
 - By SAS programmers with statistical background
 - Distribution to required recipients

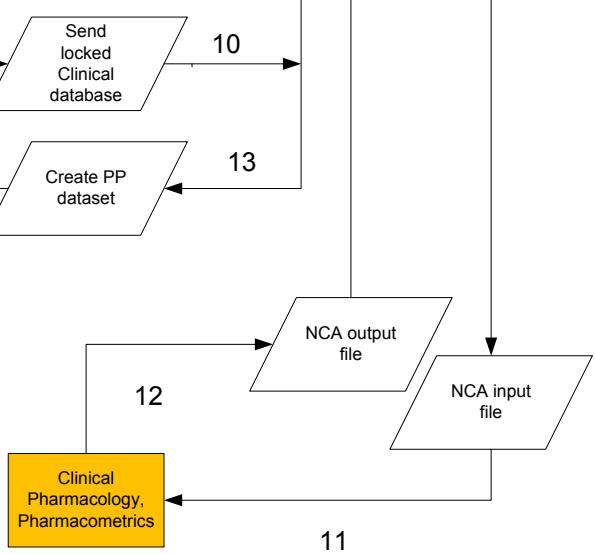
- Creation of SDTM datasets containing randomisation information based on following input
 - Receive randomisation information: from external vendor or internally created
 - Subject information: from data management

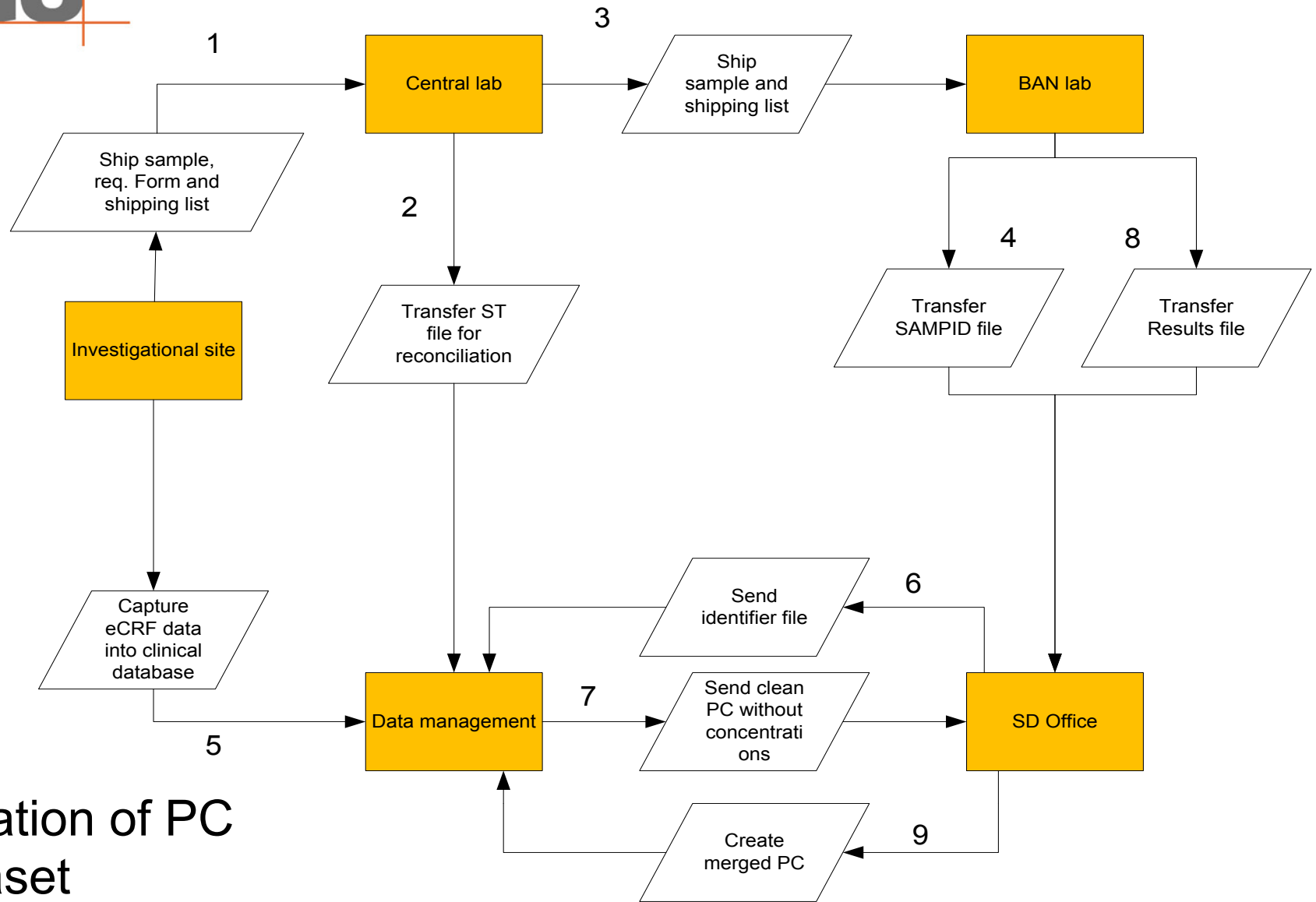
- PK data is always unblinding
- PK data (Identifiers and results): bio-analysis lab → SDO
- Blinded transfers: SDO → Data Management (DM)
- Cleaning is performed by DM
- DM delivers clean PC file to SDO
 - Contains CRF and sample tracking data
 - Without results
- SDO delivers clean PC file with results to include at time of DB lock



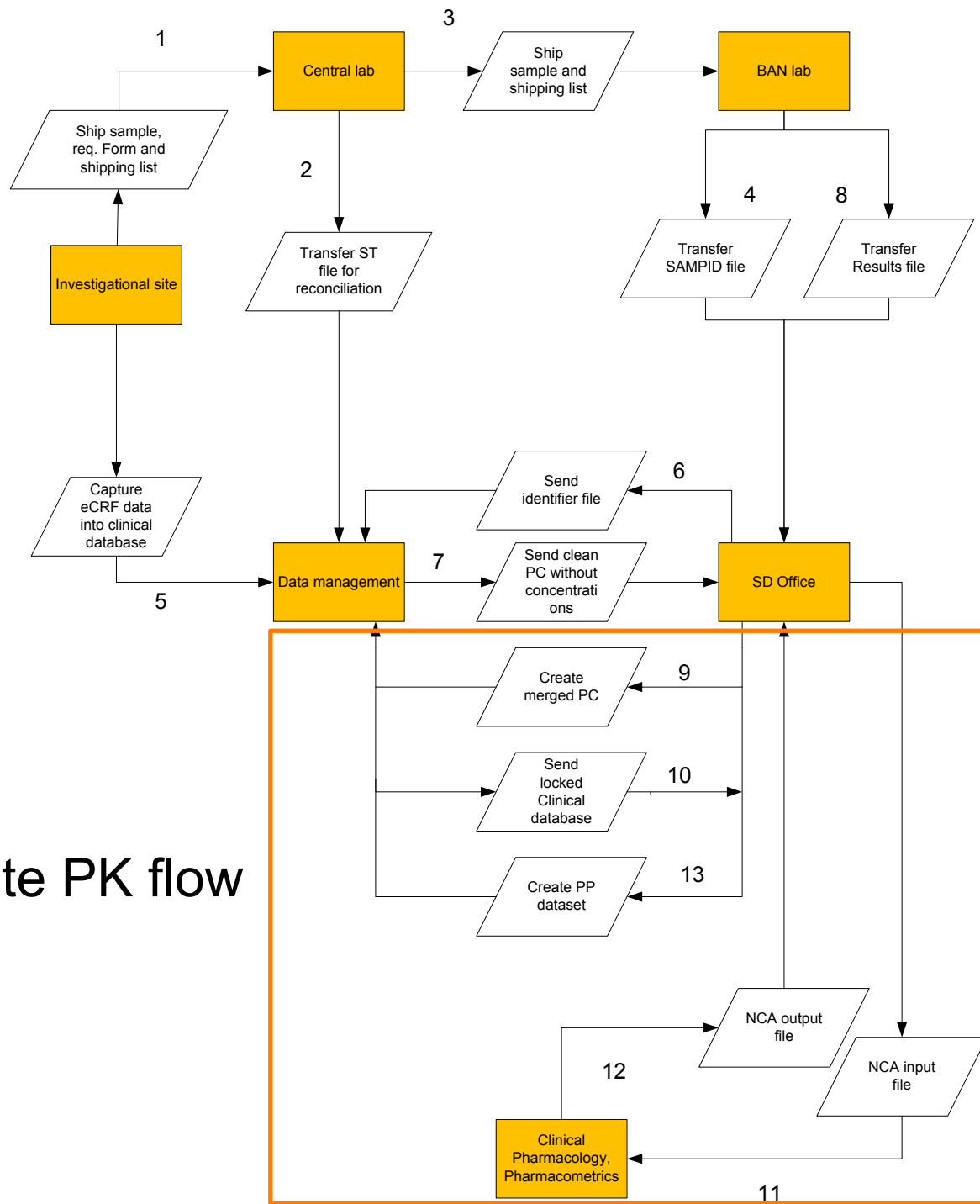
ZOOM 1

Complete PK flow





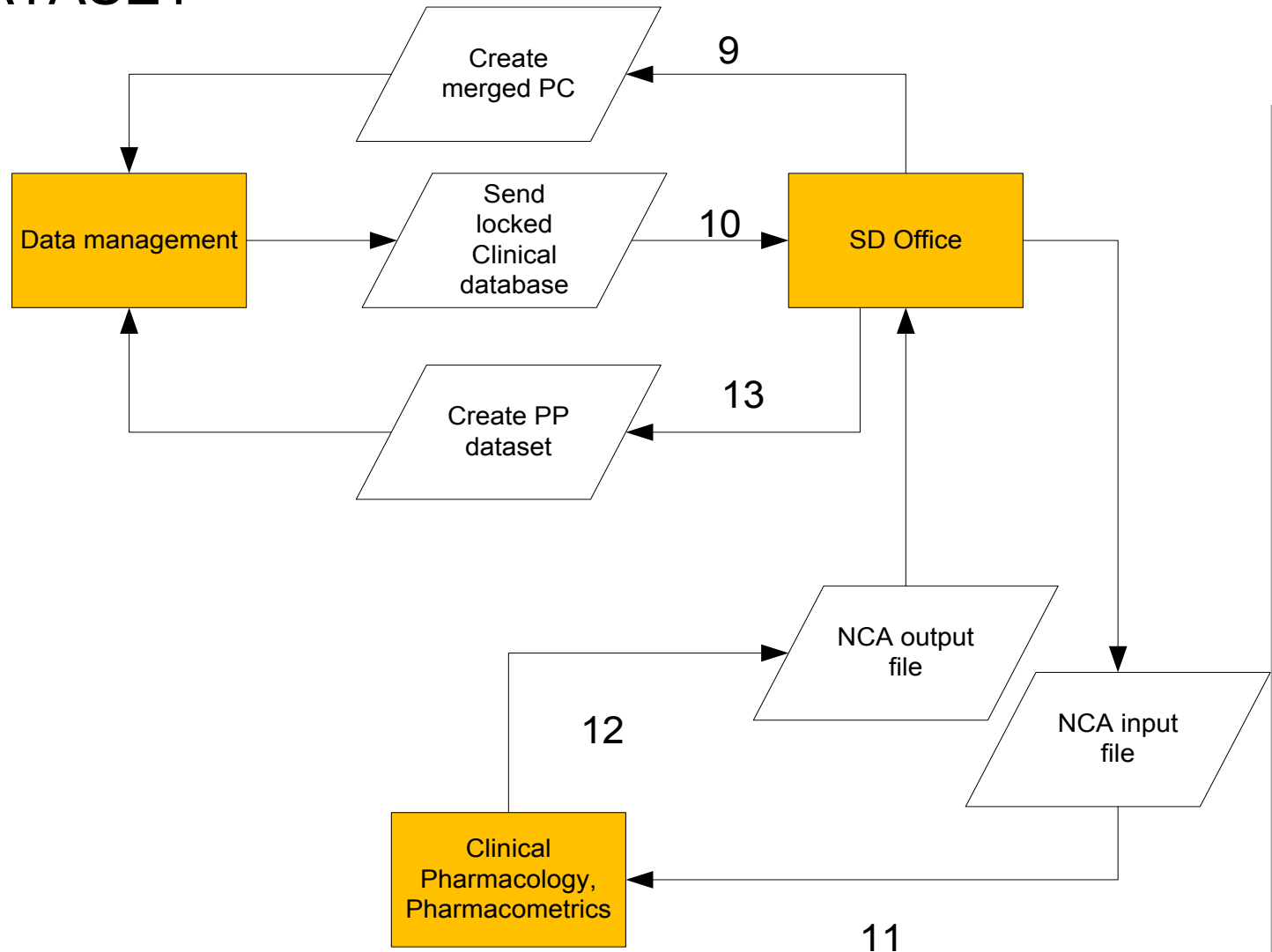
Creation of PC dataset



Complete PK flow

ZOOM 2

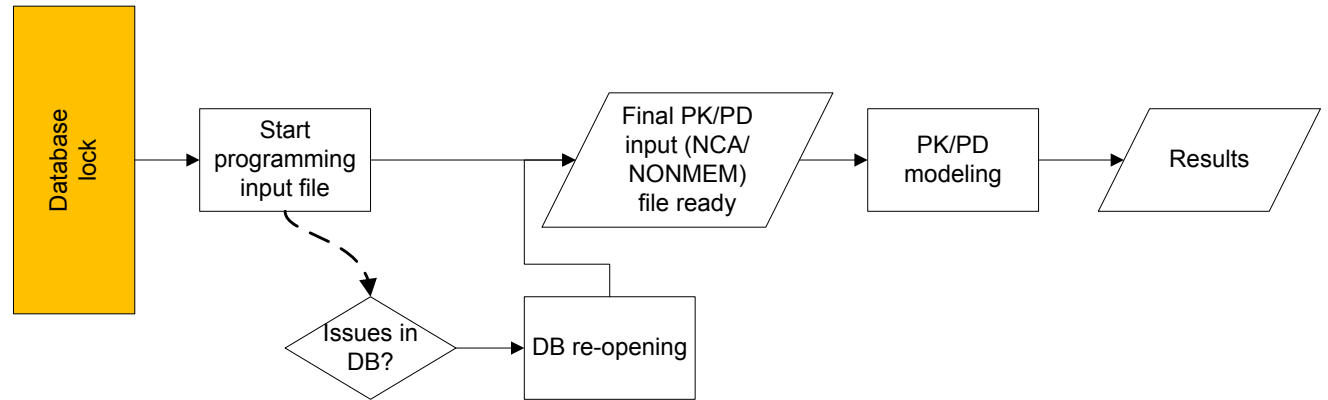
CREATION OF PK INPUT FILES AND PP DATASET



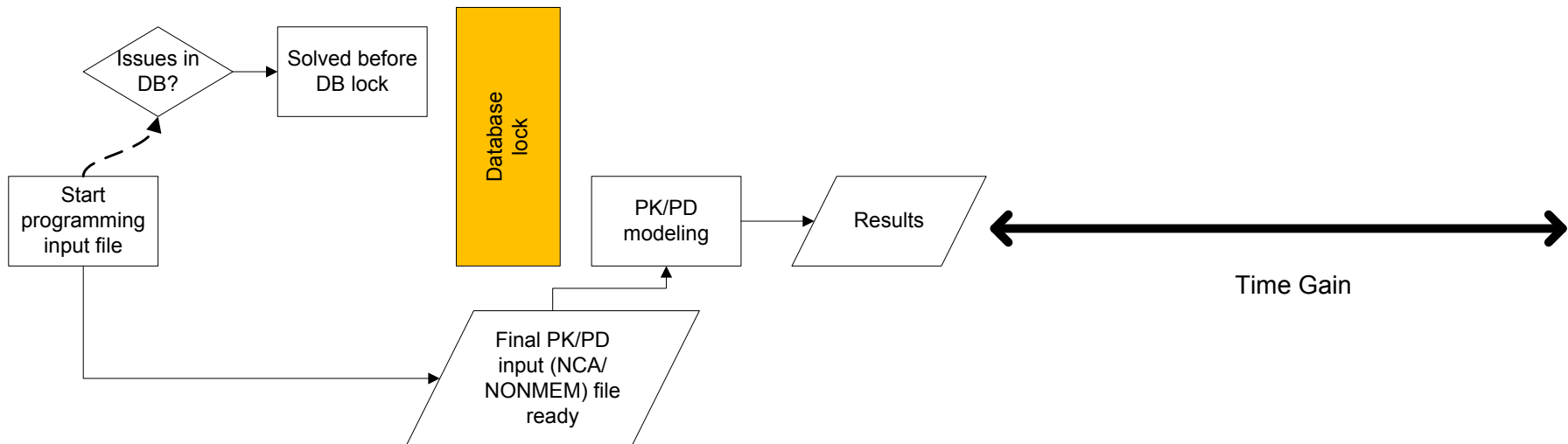


CREATION OF PK/PD INPUT FILES BY SDO

Without SD Office



With SD Office



OTHER UNBLINDING DATA STREAMS: LAB DATA

- Similar to PK data stream
- Only unblinding analytes via SDO
- SDTM domains: LB, PD, IS
- DM unblinded at release
 - Yes: combine LB parts by DM
 - No: combine LB parts and release by SDO

OTHER UNBLINDING DATA STREAMS: PROTOCOL DEVIATIONS

- Identification of unblinding protocol deviations (usually medication kit errors)

		Protocol deviation defined as	
		Any medication kit misallocation	Only treatment misallocations
Medication kit number unblinding?	Y	SD Office involved	SD Office involved
	N	Detection of medication kit misallocations by data management	SD Office involved

OTHER UNBLINDING DATA STREAMS: PROTOCOL DEVIATIONS

- Assigned medkit = planned data
- Dispensed medkit = actual data
- Reconciliation of planned and actual data by SDO
- SDO creates part of the DV domain:
 - Deviations related to medkit or treatment misallocations

CLEANING OF UNBLINDING DATA

- Only if cleaning of the unblinding content is required
- Cleaning requirements: in secure data handling plan
- Cleaning Checks are:
 - Defined
 - Documented
 - Programmed
 - Validated
 - Ran
- Review output of checks
- Write and follow up queries: blinded/unblinded

DELIVER BLINDED RESULT TRANSFERS

- PK data (Identifiers and results), other unblinding data: external vendor → SDO
- Blinded transfers: SDO → Data Management (DM)
- Cleaning is performed by DM
- Results transfer with dummy identifiers/scrambled : SDO → statistics, PK analysts: dry runs

DELIVER DATA TO UNBLINDED TEAMS

- PK data (Identifiers and results), other unblinding data: external vendor → SDO
- Blinded transfers: SDO → Data Management (DM)
- Cleaning is performed by DM
- Results transfer with real production data: SDO → safety committee, DRC, SSG

- Introduction
- Secure Data Office tasks
 - Randomisation Data
 - The Pharmacokinetic (PK) Data flow
 - Other unblinding data streams
 - Cleaning of unblinding data
 - Deliver blinded result transfers
 - Deliver data to unblinded teams
- Conclusion

- Role of SD Office
 - Create randomisation lists and datasets
 - Clean data before database lock
 - PK data
 - Medication kit misallocations
 - Other unblinding data
 - Prepare input files for PK/PD analysis upfront -> analysis can start earlier
- Results
 - Time gain after lock
 - Higher quality
 - Unblinded data available before lock for DRC, SSG, dry runs
 - Off the critical path and key results can be met



THANK YOU FOR YOUR ATTENTION

Annemie Van Dijck

Life Sciences

Team Manager Secure Data
Office Programmers



SGS Belgium NV

Generaal de Wittelaan 19A b5
2800 Mechelen - Belgium

Phone: + 32(0)488 245 699

Email: annemie.vandijck@sgs.com

Meet us at the PhUSE Booth 2

CONTACT US

clinicalresearch@sgs.com

EUROPE: +32 15 27 32 45

AMERICAS: + 877 677 2667

www.sgs.com/cro



JOIN THE SCIENTIFIC COMMUNITY CONNECT ON LINKEDIN

Discover and share current R&D market news and events including bio/analytical laboratory and clinical research drug development information.

www.sgs.com/LinkedIn-Life